

9

3SD8	Distribution Box	-----	1
3SD5	Distribution Box	-----	2~3
3SD6	Distribution Box	-----	4
TY1	Distribution Box	-----	5
Various	Distribution Boxes	-----	6~7
3SM	Metal boxes	-----	8
3SDB-1M	Distribution box	-----	9
3SGS-M	Gear Switch	-----	10
3SBC-M	Busbar Chamber	-----	11
Locks For	Distribution Box	-----	12



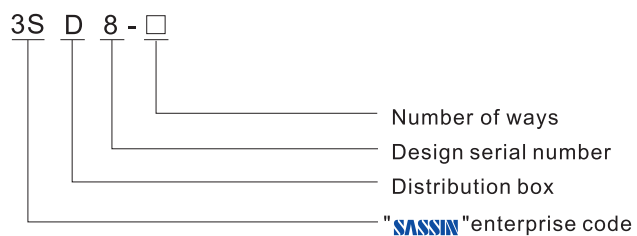
■ Structure characteristic

3SD8 distribution box is designed with streamline and fashionable outline. It can match modern buildings well when surface-installed. It has many advantages, like fast installation, easy maintenance, easy operation, etc. Base and cover will be fastened by just turning plastic screw by 90° in clockwise direction. Its user-friendly design offers more choices to users. This series of distribution box has totally six sizes including 4, 7, 10, 13, 16 and 21 ways.

■ Application scope

With rated current of 100A and rated voltage up to 400V, 3SD8 series of distribution box applies to household or similar place for electric energy distribution. Protective grade is Ip40.

■ Types and meanings



Note: number of ways (4, 7, 10, 13, 16, 21 ways for selecting)

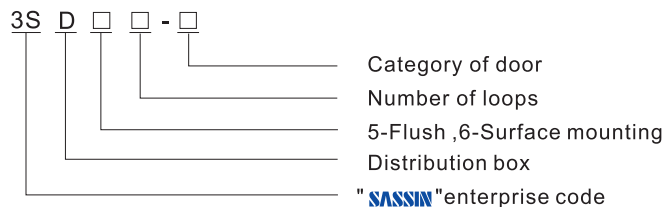


3SD5 Distribution Box

■ Application

This product applies to terminal of AC 50Hz(or 60Hz), rated operating voltage up to 400V and rated current up to 63A, equipped with various modular electric for functions of electric energy distribution, control, (short circuit, overload, earth leakage, over-voltage) protection, signal, measurement of terminal electric appliance.

■ Types and meanings



Note No mark means transparent door,
B mark means non-transparent door
Number of loops
(4 6 8 10 12 18 24 36
available for selection)

■ Normal application and installation conditions

1. Ambient temperature: $-5^{\circ}\text{C}\sim+40^{\circ}\text{C}$. the average value within 24 hours shall not exceed $+35^{\circ}\text{C}$;
2. Altitude: Installation altitude shall not exceed 2000m.
3. Atmosphere conditions: A) humidity: Relative humidity shall not exceed 50% when the ambient temperature is $+40^{\circ}\text{C}$. Higher relative humidity is permissible at lower temperature, for example, it can reach 90% at 20°C .
B) Pollution grade: grade 2
4. Installation category (over-voltage category): II

■ Main technical parameters

Equipped with transparent/non-transparent arc door
single row: door open upward 90 degrees;
Rated current: 4 way 50A, 6-36 way 63A;
Material: insulating, self-extinguishing fire-resisting material
Protection level: indirect contact proof grade 2 protection;

■ Structure:

Symmetric base enclosure: solid enclosure can be embedded into thinner wall; knockouts of various sizes on four sides of box;

Single row connecting rail can be adjusted vertically; single row: adjustable rail depth

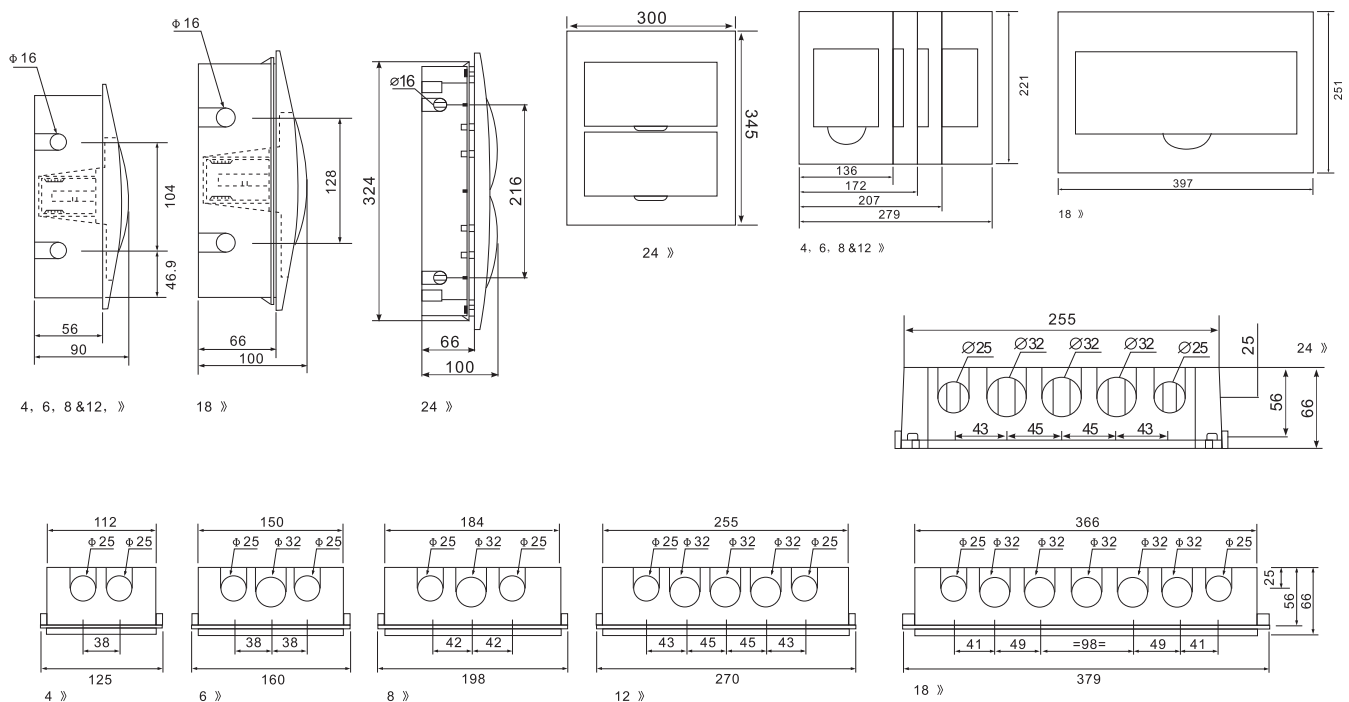
Flat front panel can be used reversely; equipped with arc door; front panel shield can be knocked out to increase number of ways.

■ Fittings inside of the box

Attached with sticky label for marking on wire front panel; ready equipped with zero line and earth terminal bar and attached with zero bar, earth bar marks and alarm mark; users can select to connect with wire or insulating busbar method.

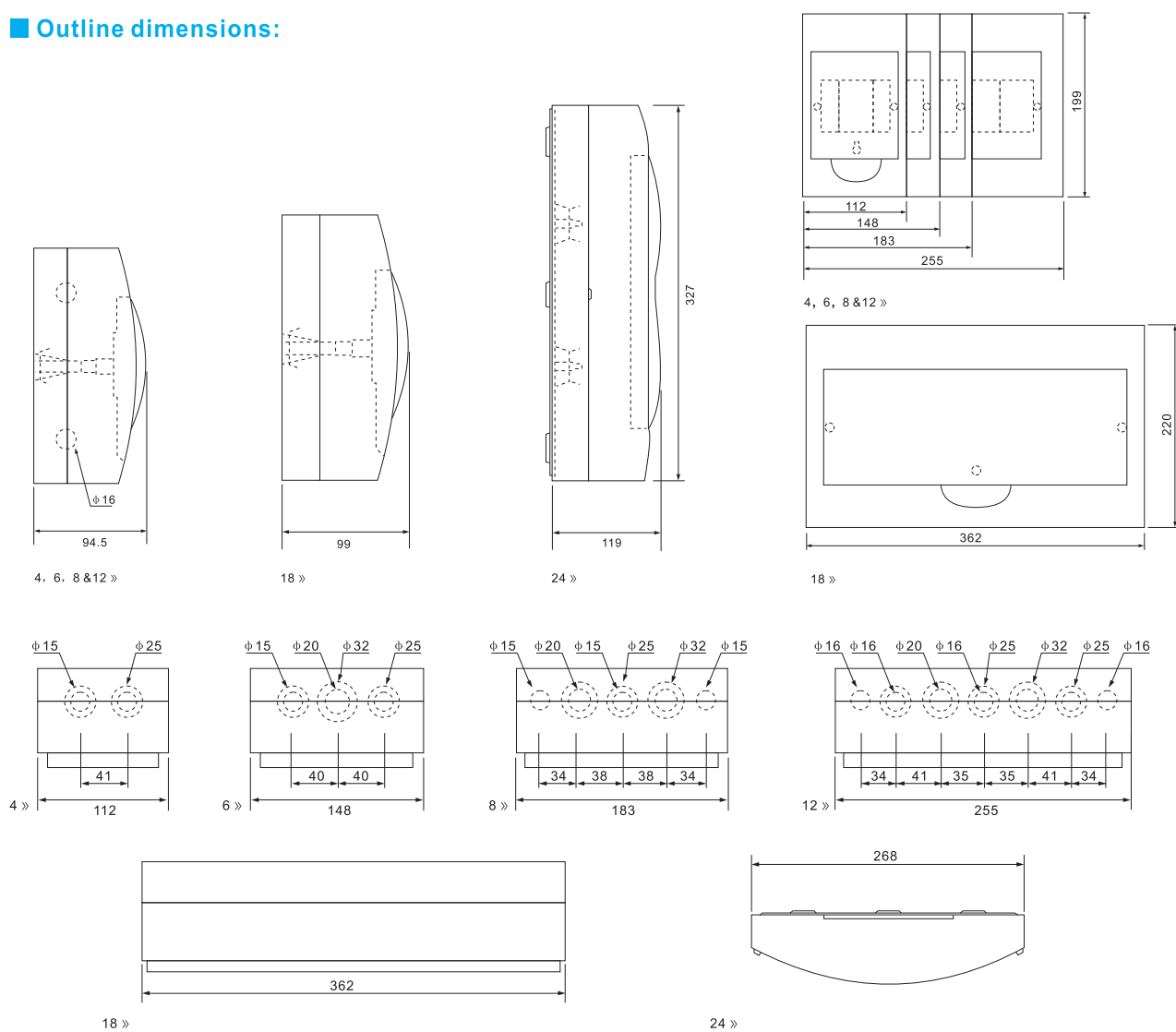
Loops	Zero bar length	Zero bar holes	Earth bar length	Earth bar holes	Width	Height
Distribution box M	(mm)	(piece)	(mm)	(piece)	(mm)	(mm)
4	37	4M4X7+M4X7	29.5	3M4X7+M4X7	6	8
6	52	6M4X7+M4X7	29.5	3M4X7+M4X7	6	8
8	67	8M4X7+M4X7	37	4M4X7+M4X7	6	8
12	37+52	10M4X7+2M4X7	52	6M4X7+M4X7	6	8
18	74.5+37	13M4X7+2M4X7	74.5	9M4X7+M4X7	6	8
24	60+60+28+28	20M4X7+4M4X7	28+28	6M4X7+2M4X7	6	8

■ Outline dimensions:





■ Outline dimensions:

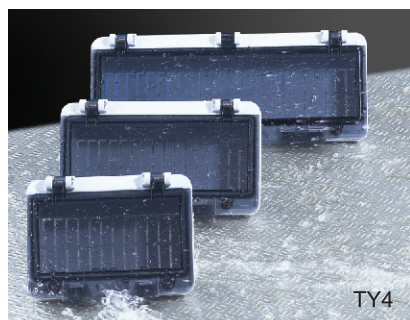




TY1



TY2



TY4

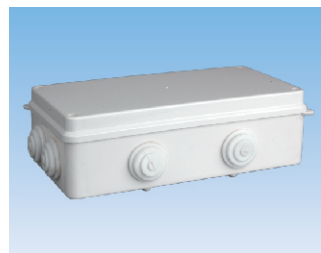
Model	Specification
TY1-6	6 ways
TY1-8	8 ways
TY1-12	12 ways
TY1-16	16 ways
TY1-20	20 ways
TY1-24	24 ways
TY1-32	32 ways
TY1-40	40 ways
TY1-48	48 ways
TY1-60	60 ways
TY2-8	8 ways
TY2-12	12 ways
TY2-16	16 ways
TY2-20	20 ways

Model	Specification
TY4-6	6 ways
TY4-8	8 ways
TY4-12	12 ways

There are both "R:Recessed Mounting & S:Surface Mounting " for all models above order could be placed like "TY1-12R 500pcs "

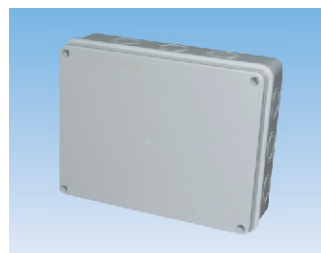
Various Distribution Boxes

■ O type water-proof boxes



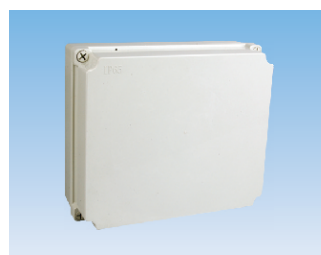
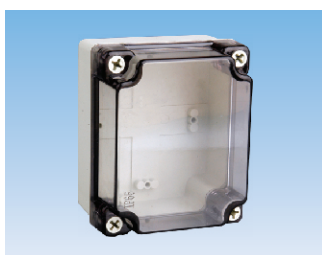
50x30	50x50	80x50	80x80x50	85x85x50	100x100x70	150x150x70
150x110x70	200x100x70	200x155x80	200x200x80	255x200x80	300x250x120	400x350x120

■ E type water-proof boxes



80x50	85x85x50	100x100x70	150x110x70	200x100x70	200x100x110	200x155x80
200x200x80	255x200x80					

■ N type water-proof boxes (color: "transparent coffee" or "white")



65x50x55	85x80x60	110x80x70	100x100x70	120x100x70	150x110x70	175x125x75
175x125x100	150x150x80	200x100x80	180x180x80	200x155x100	200x200x100	250x200x100
300x250x130	350x300x130	400x350x130				

Various Distribution Boxes



3SM Metal Boxes



Construction

- Body and door are made of in 1.5 mm steel sheet.
- Mounting plate is made of 2.5 mm steel sheet.

Finish

Standard thermosetting epoxy polyester powder coating.

- Case and door RAL 7032 mat finish.
- Mounting plate : RAL 2004 smooth finish.

Protection degree

- IP 65 to 60 529 NEMA 4.

Packing

Boxes are completed with:

- 2 zinc passivated rails fixed on the door.
- Mounting plate.
- Gland plate and gasket.
- Package with hardware for earth connection and screws to mount all components.
- Locking system with 3 mm double bar key.

Depth	Height	Width
150	200	200
150	250	200
150	300	200
150	300	250
150	300	300
150	400	300
150	400	400
150	500	300
150	500	400
150	500	500
150	600	400
150	600	500
150	600	600
150	700	500
200	300	200
200	300	250
200	300	300
200	400	300
200	400	400
200	500	300
200	500	400
200	500	500
200	600	400
200	600	500
200	600	600
200	700	400
200	700	500
200	700	600
200	800	600
200	800	800
200	1000	600
200	1000	700
200	1000	800
200	1200	600
200	1200	800
250	300	250
250	300	300
250	400	300
250	400	400
250	500	300
250	500	400

Depth	Height	Width
250	500	500
250	600	400
250	600	500
250	600	600
250	700	500
250	700	600
250	800	600
250	800	800
250	1000	600
250	1000	800
250	1000	1000
250	1200	600
250	1200	800
250	1200	1000
300	400	300
300	400	400
300	500	300
300	500	400
300	500	500
300	600	400
300	600	500
300	600	600
300	700	400
300	700	500
300	700	600
300	800	600
300	800	800
300	800	1000
300	1000	600
300	1000	800
300	1000	1000
300	1200	600
300	1200	800
300	1200	1000
300	1400	600
300	1400	800
300	1400	1000
300	1400	1200
300	1600	800
300	1600	1000
300	1800	800

3SDB-1M Distribution Box



1 Phase 4 Lines



1 Phase 6 Lines



1 Phase 8 Lines



3 Phases 18 Lines



3 Phases 36 Lines



3 Phases 48 Lines

■ Application

3SDB-1M distribution box is applied to circuit of AC 50/60 Hz, rated voltage up to AC 660V, rated current up to 125A for electric distributing, control of modern building such as large office mansions, hotels, commercial departments and industrial, etc. It can be installed with electrical devices to protect cable and equipments from overload.

■ Specification

1Phase	4 Lines	6 Lines	8 Lines	12 Lines		
3Phases	9 Lines	12 Lines	18 Lines	24 Lines	36 Lines	48 Lines

3SCS-N Changeover switch



32A



63A

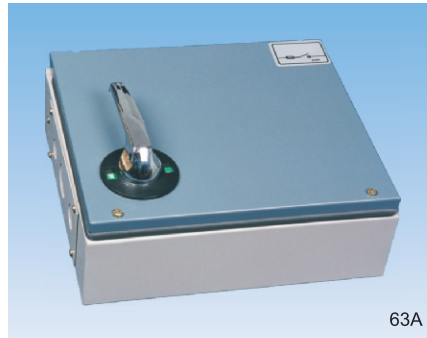
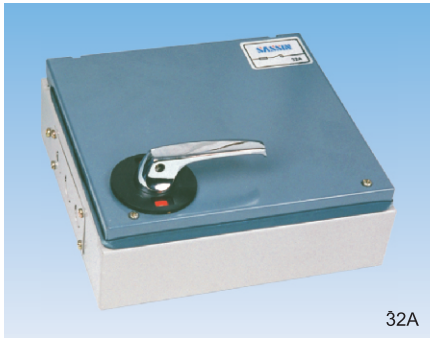


100A



200A

3SGS-M Gear Switch



■ Application

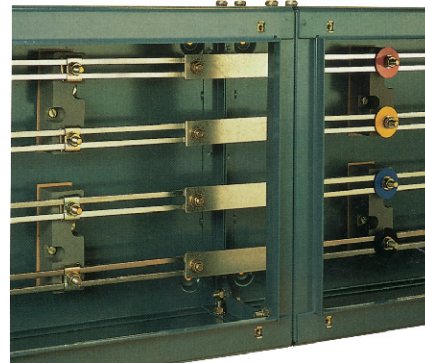
3SGS-M switch-disconnectors and switch-disconnector-fuses are typically tested as per IEC60947-3 and meet the constructional requirements for isolation specified in IEC60947-3. 3SGS-M switches are the quick making and breaking type, which are suitable for using on AC or DC circuits. Units have removable moving contact assemblies to facilitate wiring.

■ Specification

UNIT	Short Time Withstand Current (r.m.s. Amps for 1 Second)	Short Circuit Making Capacity (Peak Amps at 415V AC)	Rated Fused Short-Circuit (Prospective r.m.s. Amps at 415V AC)
20A	640A	2.96KA	80KA
32A	960A	5.12KA	80KA
63A	2000A	6.62KA	80KA
100/125A	3750A	8.42KA	80KA

Maximum cable sizes: 20A-6mm²,
32A-10mm²,
63A-35mm²,
100/125A-70mm².

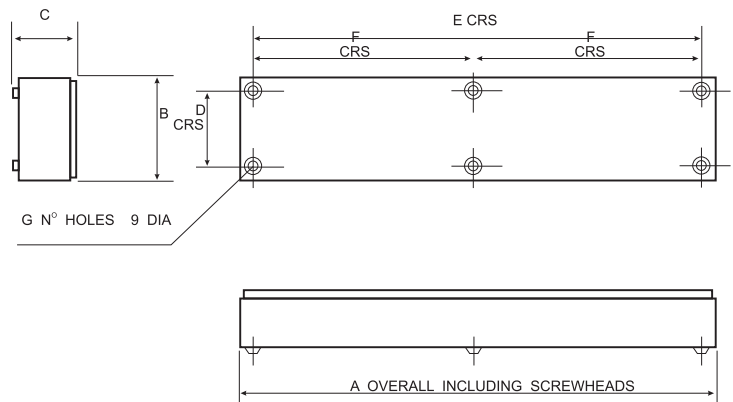
3SBC-M Busbar Chamber



Application

3SBC-M busbar chamber is designed to provide either compact, wall-mounting installations or by using optional pedestal sets-easily assembled switchboards.

Every facility is provided to enable it to be mounted easily and economically to busbar chambers which can be applied either to a suitable load-bearing vertical surface; or by means of a pedestal set, affixed to a vertical surface which need not be load-bearing. These are produced in 100, 200, 400, 630, and 800 Amp.



Specification

Current (A)	List No. According to nominal length(mm)			
	550	900	1350	1800
100	142 BBC	143 BBC	144 BBC	146 BBC
200	242 BBC	243 BBC	244 BBC	246 BBC
400	442 BBC	443 BBC	444 BBC	446 BBC
630	—	643 BBC	644 BBC	646 BBC
800	—	843 BBC	844 BBC	846 BBC

Specification

Nominal length mm	A	B	C	D	E	F	G
	mm	mm	mm	mm	mm	mm	mm
1800	1812	364	222	280	1724	862	6
1350	1362	364	222	280	1274	-	4
900	912	364	222	280	824	-	4
550	562	364	222	280	474	-	4

Locks For Distribution Box

Products model	Mounting hole dimension	Products model	Mounting hole dimension	Products model	Mounting hole dimension
 3S 401		 3S 240-3/2		 3S 308-3	
 3S 403		 3S 480-1		 3S 402(18x16)	
 3S 405		 3S 480-2		 3S 250	
 3S 508		 3S 301-1		 3S 407	
 3S 240-3/B		 3S 3021		 3S 240	
 3S 603		 3S 30211		 3S 99-B1	
 3S 240-3/A		 3S 308-2			